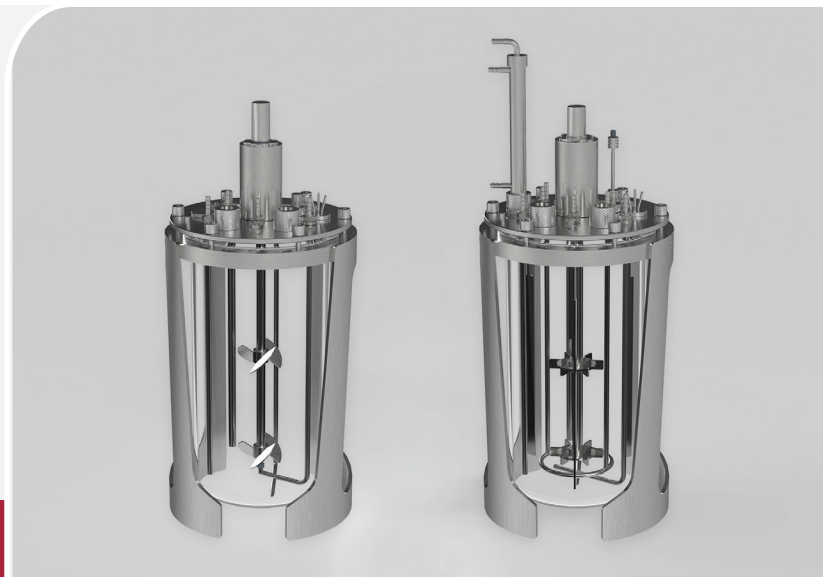




# BIOne Autoclavable Bioreactor/Fermentor

Strategically Engineered for Efficiency and Versatility

[bione@distekinc.com](mailto:bione@distekinc.com)



## Reusable Solution for Cell Culture, Microbial, & Cell-Free Applications

BIOne Autoclavable bioreactors and fermentors are available in 2L, 5L, and 10L working volumes, making them ideal for a range of bioprocessing applications. Constructed from electro-polished 316L stainless steel and borosilicate laboratory-grade glass, they feature conserved geometries and aspect ratios to ensure seamless process scalability from benchtop to pilot and production volumes. Delivered as fully assembled kits, BIOne Autoclavable bioreactors and fermentors can also be customized for your specific applications using a variety of available universal ports.

### CELL CULTURE / CELL-FREE

The BIOne Autoclavable cell culture and cell-free vessels feature dual pitched blade impellers, a sample pipe, harvest downtube, drilled hole sparger, overlay gas port, two PG13.5 probe holders, a variety of addition ports, and plugged ports for additional sensors or downtubes.



### MICROBIAL FERMENTATION

Microbial vessels feature dual Rushton impellers, baffles, a sample pipe, harvest downtube, drilled hole sparger, exhaust condenser, cooling loop, foam probe and adapter, septum, overlay gas port, two PG13.5 probe holders, a variety of addition ports, and a plugged port for an additional sensor.



### FULLY CHARACTERIZED

The BIOne Autoclavable bioreactor and fermentor are well characterized by tip speed, mixing time, P/V, OTR, and  $k_L a$ , ensuring seamless tech transfer and scale-up. Distek's team of bioprocessing experts are available to assist with tech transfer and process development when needed.



Helping Science Improve Lives

## Precision Engineering for **Reliable Scale-Up**

### MAGNETIC DRIVE AGITATION

Reduce friction and minimize contamination risk with magnetic drive agitation. This design eliminates mechanical seals, enhancing sterility and reliability for consistent bioprocess performance. The BIONe Bioreactors and Fermentors offer a wide agitation range to support various bioprocess applications: 2L/5L vessels operate from 15-1250 rpm, while the 10L vessel ranges from 15-900 rpm.

### CONVERT TO SINGLE-USE IN SECONDS

Easily transition from autoclavable to single-use with Distek's BIONe Single-Use Bioreactors and Fermentors, using the same glass vessel and stand. Designed for seamless integration, BIONe SUBs / SUFs offers flexibility without compromising performance.

### LEARN MORE ABOUT THE BIONe AUTOCLAVABLE VESSELS

For more information or to schedule an in-person or virtual demonstration, contact our BIONe team at [bione@distekinc.com](mailto:bione@distekinc.com). We're dedicated to help you find the right solution.

	BIONe 2L AUTOCLAVABLE		BIONe 5L AUTOCLAVABLE		BIONe 10L AUTOCLAVABLE	
TOTAL VOLUME	3L		7L		13L	
WORKING VOLUME (MAXIMUM)	2L		5L		10L	
WORKING VOLUME (MINIMUM)	0.75L Microbial 0.95L Cell Culture		1.5L Microbial 1.7L Cell Culture		2.3L Microbial 3.0L Cell Culture	
VESSEL DIAMETER (MM)	130 mm (ID)		160 mm (ID)		190 mm (ID)	
VESSEL HEIGHT (MM)	250 mm (Inner)		357 mm (Inner)		470 mm (Inner)	
FULLY ASSEMBLED MAXIMUM HEIGHT (MM)	478 mm		580 mm		752 mm	
FULLY ASSEMBLED DIAMETER (MM)	195 mm		233 mm		271 mm	
PITCHED BLADE IMPELLER DIAMETER (MM)	45 mm		60 mm		79 mm	
RUSHTON IMPELLER DIAMETER (MM)	58 mm		76 mm		81 mm	
FLUTE SPARGER (MM) (STANDARD SPARGER, INCLUDED WITH PURCHASE)	(7x) 0.86 mm		(7x) 0.86 mm		(7x) 1.5 mm	
MICRO SPARGER (MM) (OPTIONAL SPARGER, AVAILABLE FOR PURCHASE)	15 µm		15 µm		15 µm	
RING SPARGER (MM) (OPTIONAL SPARGER, AVAILABLE FOR PURCHASE)	(11x) 1.5 mm		(11x) 1.5 mm		(11x) 1.5 mm	
HEADPLATE PORTS	5	M18 (16.5 mm)	6	M18 (16.5 mm)	6	M18 (16.5 mm)
	2	M12 (10.5 mm)	2	M12 (10.5 mm)	5	M12 (10.5 mm)
	7	Thru Hole for M10 Probes (10.2 mm)	12	M10 (10.2 mm)	10	M10 (10.2 mm)
	3	Thru Hole for M6 (6.2 mm)				