

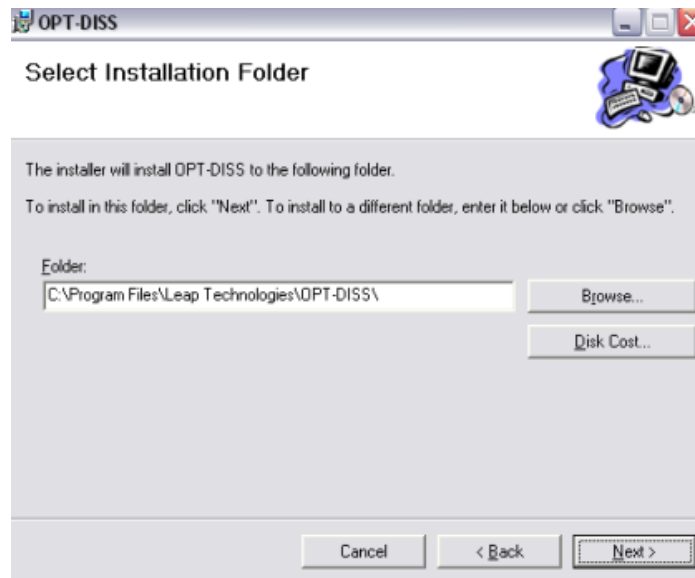
Date	15 March 2012	Service Note #	OPT-DISS-1037	Updated	15 March 2012
Product	Opt-Diss 405		Created By	Greg Schwager	
Description	Change Installation Folder Path				

Release	<input checked="" type="checkbox"/>	Internal	<input checked="" type="checkbox"/>	Distributors	<input type="checkbox"/>	Customers
----------------	-------------------------------------	-----------------	-------------------------------------	---------------------	--------------------------	------------------

Parts Required	Serial Numbers Affected
Software Installation	Any Opt-Diss 405 that is having the software installed or reinstalled

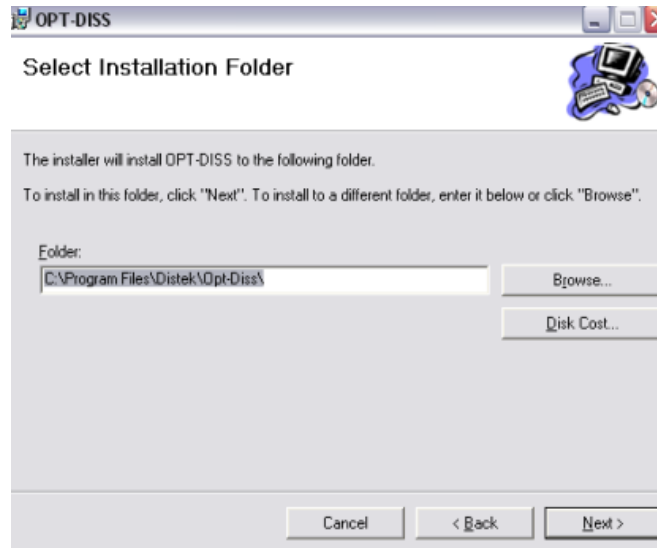
Solution / Action

When installing the Opt-Diss 405 software, in the “Select Installation Folder” step, the default installation folder is “C:\Program Files\Leap Technologies\OPT-DISS”.



Current Installation Path

Please highlight the default path, delete and type in "C:\Program Files\Distek\Opt-Diss" then click "Next" during installation.



New Installation Path



Future software releases will have the new Installation Folder Path entered by default.